

REVISED

United States Department of the Interior
National Park Service

NATIONAL REGISTER OF HISTORIC PLACES
REGISTRATION FORM

This form is for use in nominating or requesting determinations for individual properties and districts. See instructions in How to Complete the National Register of Historic Places Registration Form (National Register Bulletin 16A). Complete each item by marking "x" in the appropriate box or by entering the information requested. If any item does not apply to the property being documented, enter "N/A" for "not applicable." For functions, architectural classification, materials, and areas of significance, enter only categories and subcategories from the instructions. Place additional entries and narrative items on continuation sheets (NPS Form 10-900a). Use a typewriter, word processor, or computer, to complete all items.

1. Name of Property

historic name Bunnell Civic Center

other names/site number Bunnell City Hall

2. Location

street & number 200 S. Church Street N/A not for publication

city or town Bunnell N/A vicinity

state FLORIDA code FL county Flagler code 035 zip code 32110

3. State/Federal Agency Certification

As the designated authority under the National Historic Preservation Act, as amended, I hereby certify that this nomination request for determination of eligibility meets the documentation standards for registering properties in the National Register of Historic Places and meets the procedural and professional requirements set forth in 36 CFR Part 60. In my opinion, the property meets does not meet the National Register criteria. I recommend that this property be considered significant nationally statewide locally. (See continuation sheet for additional comments.)

Signature of certifying official/Title _____ Date _____

State Historic Preservation Officer, Division of Historical Resources
State or Federal agency and bureau

In my opinion, the property meets does not meet the National Register criteria. (See continuation sheet for additional comments.)

Signature of certifying official/Title _____ Date _____

State or Federal agency and bureau

4. National Park Service Certification

I hereby certify that the property is:

- entered in the National Register
 See continuation sheet
- determined eligible for the National Register
 See continuation sheet.
- determined not eligible for the National Register
 See continuation sheet.
- removed from the National Register.
- other, (explain) _____

Signature of the Keeper

Date of Action

_____	_____
_____	_____
_____	_____
_____	_____

Bunnell City Hall
Name of Property

Flagler County, Florida
County and State

5. Classification

Ownership of Property
(Check as many boxes as apply)

- private
- public-local
- public-State
- public-Federal

Category of Property
(Check only one box)

- buildings
- district
- site
- structure
- object

Number of Resources within Property
(Do not include any previously listed resources in the count)

Contributing	Noncontributing	
1	0	buildings
0	0	sites
0	0	structures
0	0	objects
1	0	total

Name of related multiple property listings
(Enter "N/A" if property is not part of a multiple property listing.)

N/A

Number of contributing resources previously listed in the National Register

0

6. Function or Use

Historic Functions
(Enter categories from instructions)

SOCIAL/Meeting Hall

GOVERNMENT/City Hall

Current Functions
(Enter categories from instructions)

GOVERNMENT/City Hall

7. Description

Architectural Classification
(Enter categories from instructions)

Rustic Vernacular

Colonial Revival

Materials
(Enter categories from instructions)

foundation Concrete

walls Coquina Stone

roof Gable: Standing Seam Sheet Metal

other _____

Narrative Description

(Describe the historic and current condition of the property on one or more continuation sheets.)

8. Statement of Significance

Applicable National Register Criteria

(Mark "X" in one or more boxes for the criteria qualifying the property for National Register listing.)

- A** Property is associated with events that have made a significant contribution to the broad patterns of our history.
- B** Property is associated with the lives of persons significant in our past.
- C** Property embodies the distinctive characteristics of a type, period, or method of construction or represents the work of a master, or possesses high artistic values, or represents a significant and distinguishable entity whose components lack individual distinction.
- D** Property has yielded, or is likely to yield information important in prehistory or history.

Criteria Considerations
(Mark "X" in all the boxes that apply.)

Property is:

- A** owned by a religious institution or used for religious purposes.
- B** removed from its original location.
- C** a birthplace or grave.
- D** a cemetery.
- E** a reconstructed building, object, or structure.
- F** a commemorative property.
- G** less than 50 years of age or achieved significance within the past 50 years

Narrative Statement of Significance

(Explain the significance of the property on one or more continuation sheets.)

9. Major Bibliographical References

Bibliography

Cite the books, articles, and other sources used in preparing this form on one or more continuation sheets.)

Previous documentation on file (NPS):

- preliminary determination of individual listing (36 CFR 36) has been requested
- previously listed in the National Register
- previously determined eligible by the National Register
- designated a National Historic Landmark
- recorded by Historic American Buildings Survey # _____
- recorded by Historic American Engineering Record

Areas of Significance

(Enter categories from instructions)

ARCHITECTURE

GOVERNMENT

Period of Significance

1935-1958

Significant Dates

1937

Significant Person

N/A

Cultural Affiliation

N/A

Architect/Builder

Arch: Unknown

Blder: Z.D. Holland

Primary location of additional data:

- State Historic Preservation Office
- Other State Agency
- Federal agency
- Local government
- University
- Other

Name of Repository

10. Geographical Data

Acreage of Property 1

UTM References

(Place additional references on a continuation sheet.)

1	1	7	4	7	5	1	8	9	3	2	5	9	4	1	8
	Zone		Easting						Northing						
2															

3															
	Zone		Easting						Northing						
4															

See continuation sheet

Verbal Boundary Description

(Describe the boundaries of the property on a continuation sheet.)

Boundary Justification

(Explain why the boundaries were selected on a continuation sheet.)

11. Form Prepared By

name/title Matthew G. Hyland, Architectural Historian

organization GAI Consultants, Inc. date June 30, 2008

street & number 1301 Riverplace Boulevard, Suite 900 telephone 904.363.1110

city or town Jacksonville state Florida zip code 32207

Additional Documentation

Submit the following items with the completed form:

Continuation Sheets

Maps

A USGS map (7.5 or 15 minute series) indicating the property's location.

A Sketch map for historic districts and properties having large acreage or numerous resources.

Photographs

Representative black and white photographs of the property.

Additional items

(check with the SHPO or FPO for any additional items)

Property Owner

(Complete this item at the request of SHPO or FPO.)

name City of Bunnell

street & number 200 S. Church Street telephone 386.437.7500

city or town Bunnell state FL zip code 32110

Paperwork Reduction Act Statement: This information is being collected for applications to the National Register of Historic Places to nominate properties for listing or determine eligibility for listing, to list properties, and amend listings. Response to this request is required to obtain a benefit in accordance with the National Historic Preservation Act, as amended (16 U.S.C. 470 et seq.).

Estimated Burden Statement: Public reporting burden for this form is estimated to average 18.1 hours per response including time for reviewing instructions, gathering and maintaining data, and completing and reviewing the form. Direct comments regarding this burden estimate or any aspect of this form to the Chief, Administrative Services Division, National Park Service, P.O. Box 37127, Washington, DC 20013-7127; and the Office of Management and Budget, Paperwork Reductions Projects (1024-0018), Washington, DC 20503.

**United States Department of the Interior
National Park Service**

**NATIONAL REGISTER OF HISTORIC PLACES
CONTINUATION SHEET**

Section number 7 Page 1

BUNNELL CIVIC CENTER (CITY HALL)
BUNNELL, FLAGLER COUNTY, FLORIDA

SUMMARY PARAGRAPH

The Bunnell Civic Center (now City Hall) is being nominated to the NRHP under the multiple cover entitled "Florida's New Deal Resources" by Sidney Johnston. Bunnell Civic Center was constructed with Works Progress Administration funding in 1937. The Civic Center is an example of the building property type defined in the multiple cover.

SETTING

The current City of Bunnell City Hall is located at 200 South Church Street, within the corporate limits of the City of Bunnell, in Flagler County, Florida. Bunnell is located in the northeastern Florida, south of Jacksonville and St. Augustine, and north of Daytona Beach. Flagler County is bounded on the east by the Atlantic Ocean, on the north by St. Johns County, on the west by Putnam County and parts of Volusia County, and on the south by Volusia County. Interstate 95, US Route 1, and State Route 100 join Bunnell to other communities along the Atlantic Coast. City Hall is situated downtown among a conventional urban arrangement of blocks on a rectilinear grid. Lake Lucille is located just southwest of the current City Hall building, and is a prominent feature in the landscape around the site.

DESCRIPTION

Bunnell City Hall stands on a continuous stone foundation. The exterior cladding consists of dressed coquina stone laid up in irregular courses. The fenestration consists of metal casement windows and some replacement windows. The one story building has a transverse gable roof. The prominent feature of the façade is the pedimented portico that advances slightly from the façade wall. Concrete steps lead to a recessed entry within a three-bay portico. Two stone chimney stacks pierce the roof at the ridge line. Segmental arches surmount the apertures of the three-bay entry. The eave walls feature buttresses. The window apertures feature coquina stone jack arches. The stones show evidence of tool marks. A stone compass arch stands above a sidewalk on the gable of the building. On the façade, a carved shield reads WPA 1937. A one-story, flat-roof addition has been appended to the rear of the building. It is not visible from the front of the building.

**United States Department of the Interior
National Park Service**

**NATIONAL REGISTER OF HISTORIC PLACES
CONTINUATION SHEET**

Section number 8 Page 1

BUNNELL CIVIC CENTER (CITY HALL)
BUNNELL, FLAGLER COUNTY, FLORIDA
SIGNIFICANCE

SUMMARY PARAGRAPH

The Bunnell City Hall is significant at the local level and the state level under Criteria A and C in the areas of Community Planning and Development and Architecture. The building reflects historic themes associated with the New Deal in Florida and stands as an excellent example of Rustic Vernacular/Colonial Revival style architecture adapted to a local civic function.

HISTORICAL CONTEXT

Like other areas of Florida, Flagler County's economy slowed greatly in the late 1920s as real estate values plummeted. The onset of the Great Depression in the 1930s perpetuated the economic difficulties. Between 1930 and 1935, over 1,000 fewer acres were under cultivation, and the number of farms declined from 144 to 134 during the same five year period. However, the full brunt of the economic downturn was tempered by President Franklin D. Roosevelt's national relief programs. Important New Deal-era programs in Florida were the Civilian Conservation Corps (CCC) and the Civil Works Administration (CWA), later renamed the Works Progress Administration (WPA). The WPA provided jobs for professional workers and laborers, whose work included the construction or improvement of many roads, public buildings, parks, and airports in Florida. In Bunnell, the WPA was responsible for building the town Civic Center (the current Bunnell City Hall) throughout 1936. This building, constructed entirely of coquina, was a center of activity in Bunnell during the late 1930s. The building hosted public events including the local high school prom and the celebrated Cabbage Ball, the social event of the year (Janus Research 2007: 37).

The economic effects commonly associated with the Great Depression arrived in Florida before the 1929 stock market crash affected the rest of the nation. Florida's economy lost its vigor with the collapse of the Land Boom in 1926. Railroads and banks declared bankruptcy. Real estate developers defaulted on their loans. Mortgage brokers went out of business. Construction projects halted. A fruit fly infestation in 1929 impacted the citrus industry.

The Bunnell City Hall project dates from 1935 and was intended as a recreational and community center. The WPA proposal document noted the amount of federal funding and an estimate of man hours involved in completing the project and providing local jobs. The proposers justified the project, stating that it "is essential to keep men at work in Flagler County. There is no other project in Flagler County at this time; all others have been completed. It will eliminate a mosquito breeding swamp in the center of Bunnell, establish recreational facilities for the whole of Flagler County, which has no such facilities at present" (WPA Project Proposal 1935).

The historical context for the Depression and the New Deal is more fully described in the multiple property submission cover form for Florida's New Deal Resources by Sidney Johnston. Johnston notes that many municipalities constructed community centers or city halls through WPA funding, including Bunnell (Johnston 2005: Section E, Page 64).

**United States Department of the Interior
National Park Service**

**NATIONAL REGISTER OF HISTORIC PLACES
CONTINUATION SHEET**

Section number 8 Page 2

BUNNELL CIVIC CENTER (CITY HALL)
BUNNELL, FLAGLER COUNTY, FLORIDA
SIGNIFICANCE

HISTORICAL SIGNIFICANCE—CRITERION A

As stated above in the historic context, Bunnell City Hall conveys a strong association with historic themes that emerged from the Great Depression. The historical significance of the building is in the role it played in the economic recovery stimulated by New Deal programs, federal funding, and local labor.

ARCHITECTURAL SIGNIFICANCE—CRITERION C

The Bunnell City Hall's areas of significance also include architecture. It is an important and well-maintained example of the Rustic Vernacular/Colonial Revival style adapted for a civic use. The buildings maintain sufficient levels of historic architectural integrity to convey its historic character. The building retains integrity of design, materials, setting, location, association, feeling, and workmanship.

**United States Department of the Interior
National Park Service**

**NATIONAL REGISTER OF HISTORIC PLACES
CONTINUATION SHEET**

Section number 9 Page 1

BUNNELL CIVIC CENTER (CITY HALL)
BUNNELL, FLAGLER COUNTY, FLORIDA
MAJOR BIBLIOGRAPHICAL REFERENCES

BIBLIOGRAPHY

Janus Research. *CRAS of the US 1/SR 5 Black Branch Creek Bridge Replacement Project*. Report submitted to Federal Highway Administration; on file at the Florida Office of Cultural and Historical Programs, Tallahassee, 2007.

Johnston, Sidney. Florida's New Deal Resources. National Register of Historic Places, Multiple Property Documentation Form, United States Department of the Interior, National Park Service, Washington, D.C., 2005

WPA Project Proposal for Recreational and Community Center, on file at Bunnell City Hall, 1935.

**United States Department of the Interior
National Park Service**

**NATIONAL REGISTER OF HISTORIC PLACES
CONTINUATION SHEET**

Section number 10 Page 1

BUNNELL CIVIC CENTER (CITY HALL)
BUNNELL, FLAGLER COUNTY, FLORIDA
GEOGRAPHICAL DATA

Verbal Boundary Description

The boundary of the Bunnell City Hall is defined as its current tax parcel.

Architectural Styles

OTHER/Rustic Vernacular
LATE 19TH & 20TH CENTURY REVIVALS/Colonial Revival

United States Department of the Interior
National Park Service

**NATIONAL REGISTER OF HISTORIC PLACES
CONTINUATION SHEET**

Section number 11 Page 1

BUNNELL CIVIC CENTER (CITY HALL)
BUNNELL, FLAGLER COUNTY, FLORIDA
LIST OF PHOTOGRAPHS

List of Photographs

1. 200 South Church Street
2. Bunnell City Hall, Bunnell (Flagler County), Florida
3. Ronya Johnson
4. 22 June 2008
5. City of Bunnell South Church Street, Bunnell, Florida
6. Façade Looking Northeast
7. Photo 1 of 8

Numbers 1 through 5 are the same for the remaining photographs.

6. Façade Looking Northeast
7. Photo 2 of 8

6. Facade and Northwest Elevation, Looking East
7. Photo 3 of 8

6. Plaque on Façade Looking Northeast
7. Photo 4 of 8

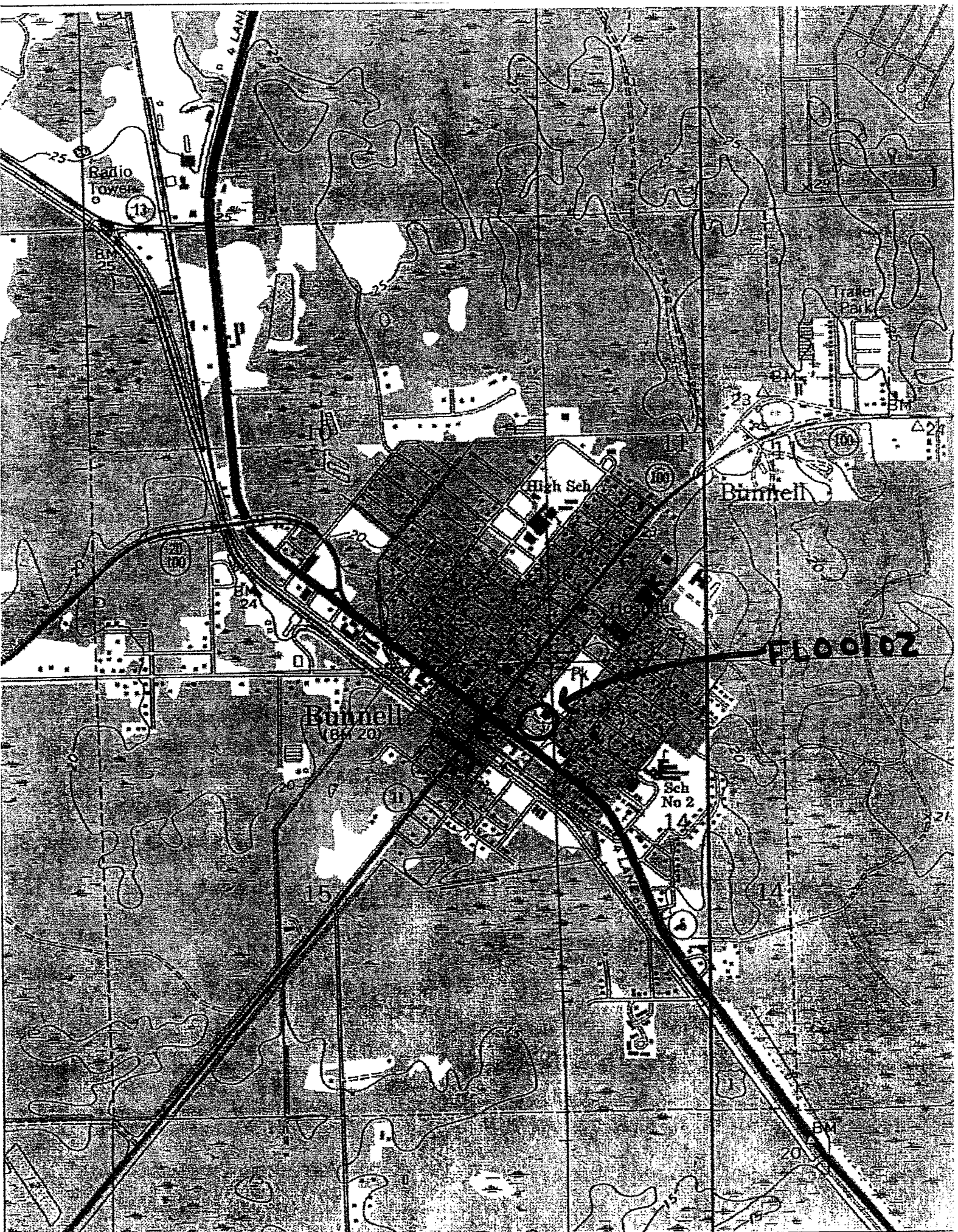
6. Rear Elevation Looking South
7. Photo 5 of 8

6. Southeast Elevation Looking West
7. Photo 6 of 8

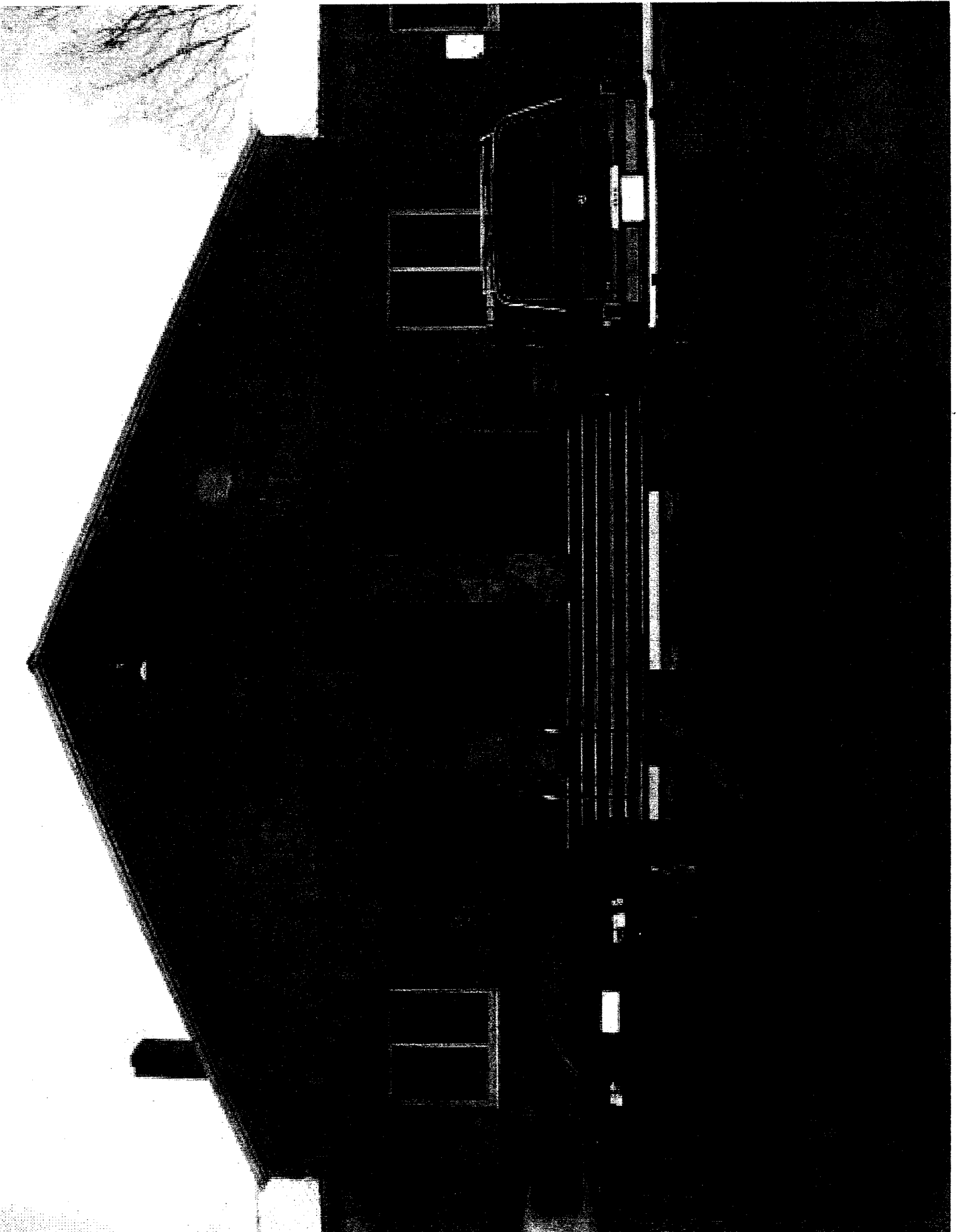
6. Rear Elevation Looking Southwest
7. Photo 7 of 8

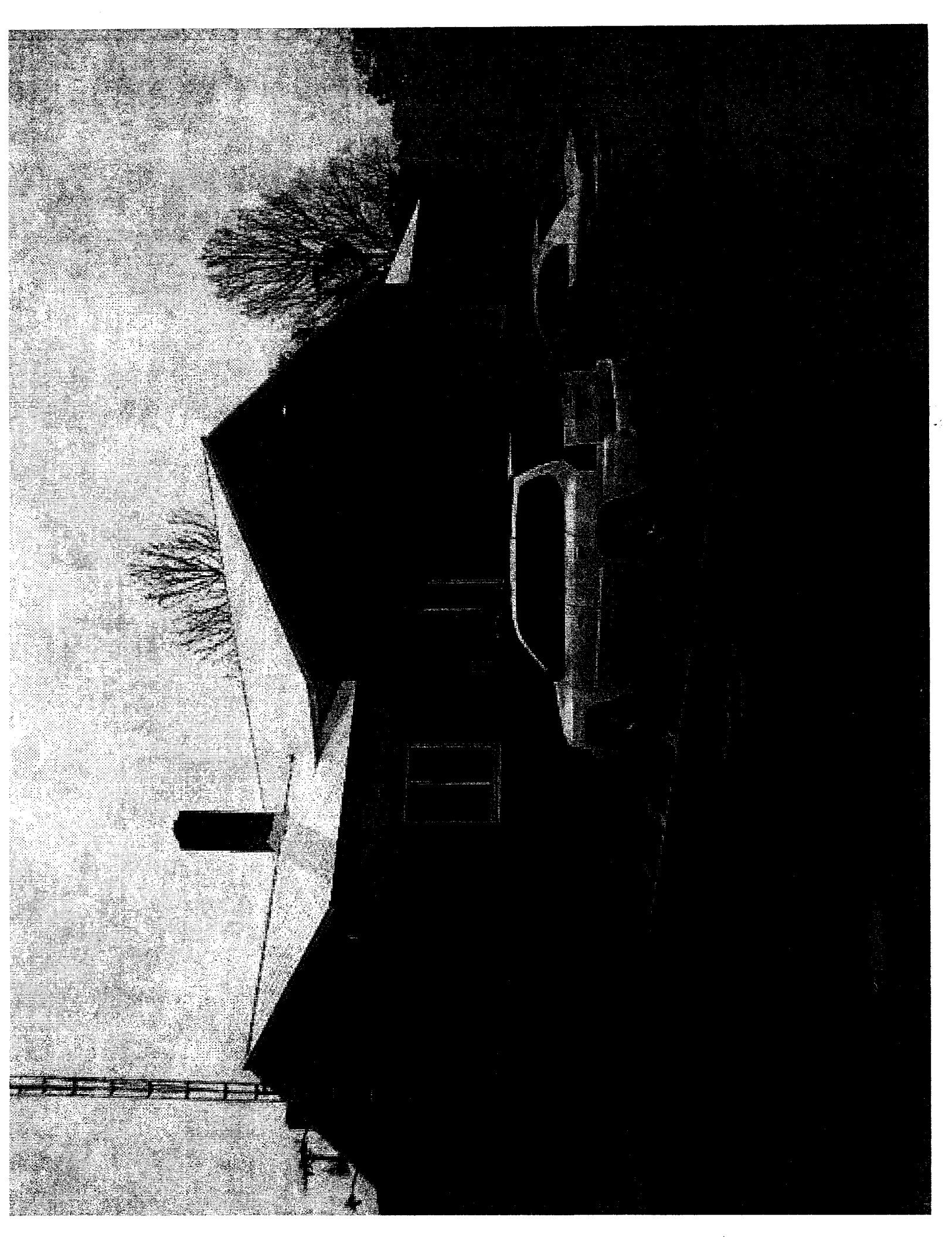
6. Rear and Northwest Elevation Looking Southeast
7. Photo 8 of 8



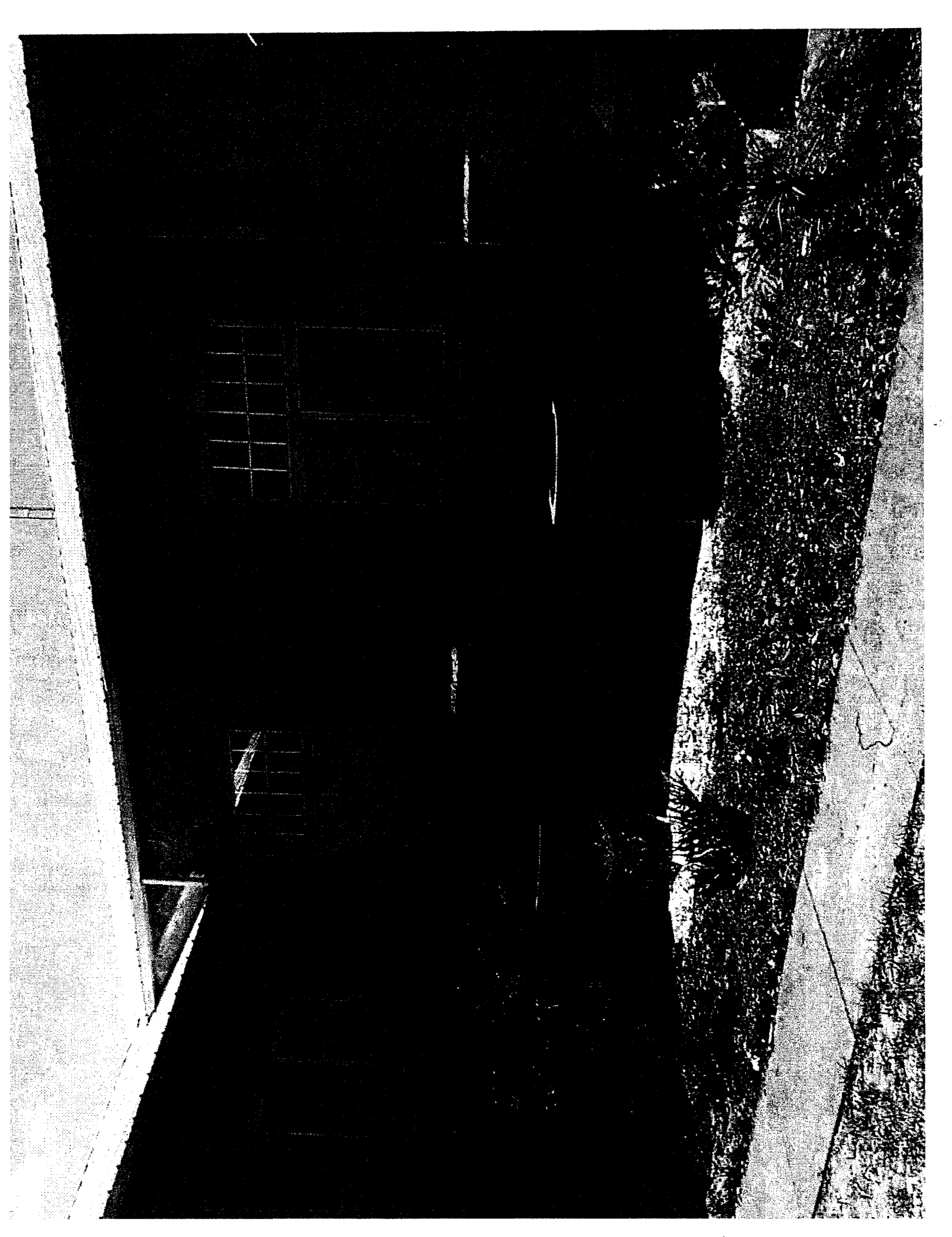


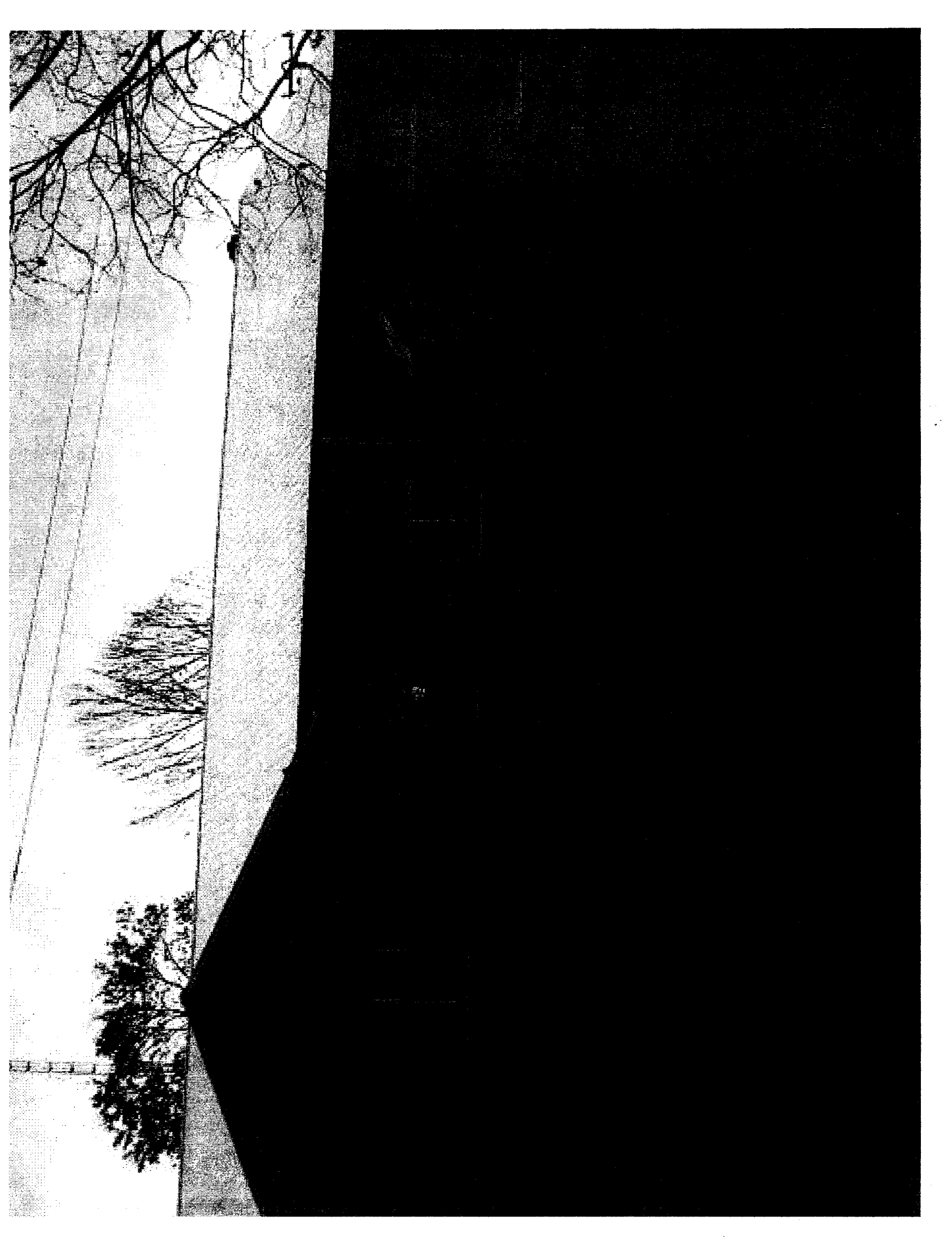


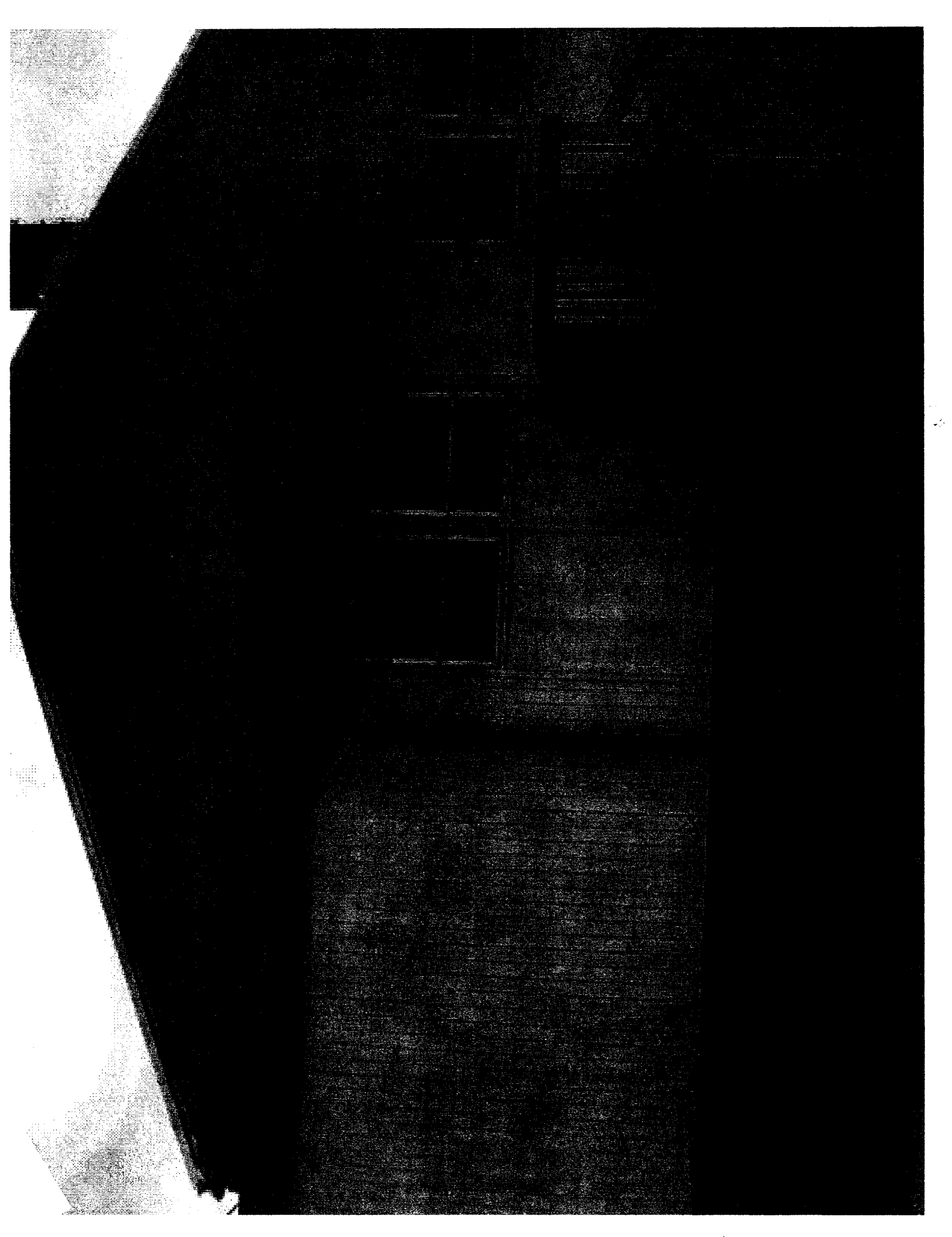


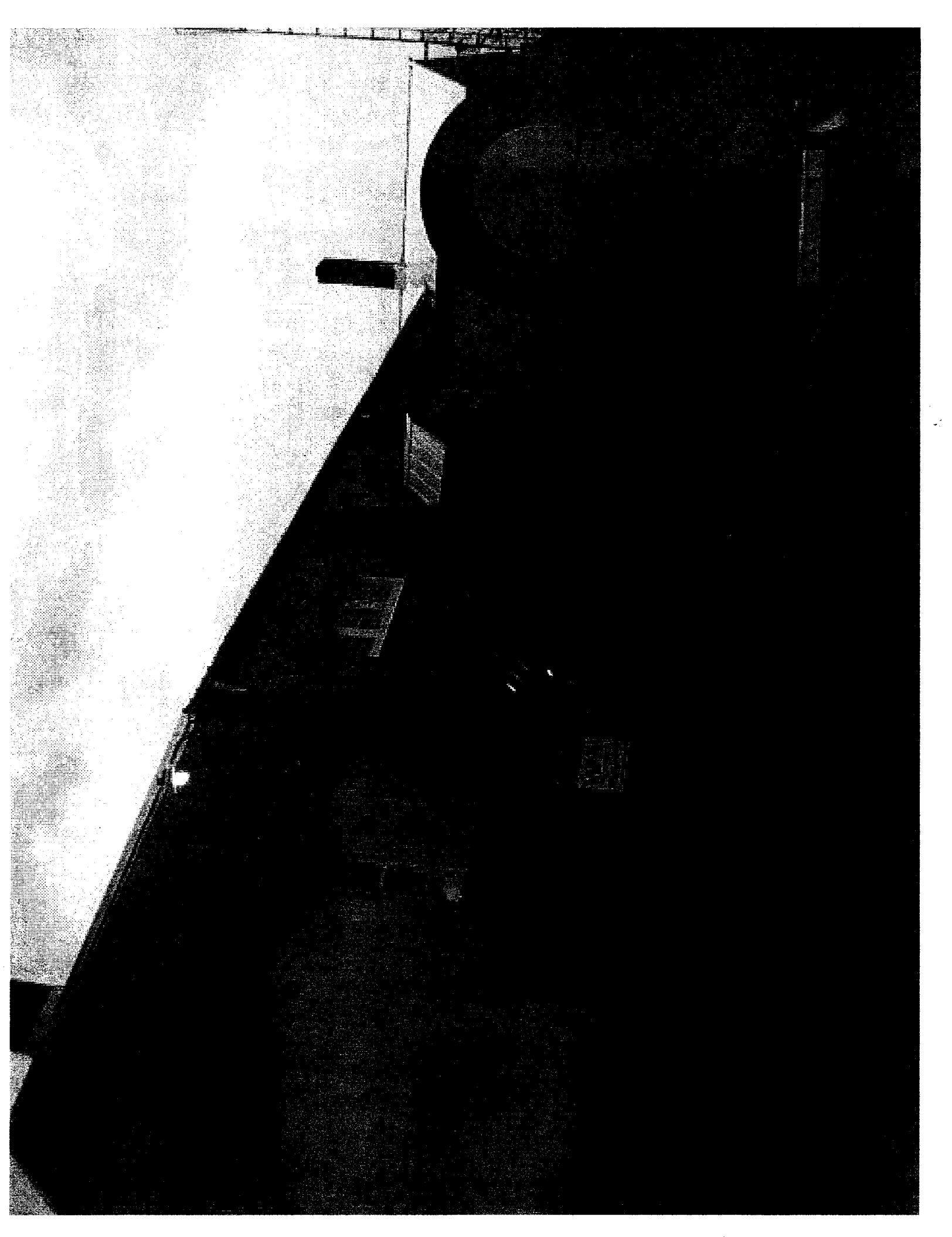












4 74 000m

17 4 75 000m

17 4 76 000m

32 60 000m

32 60 000m

32 59 000m

32 59 000m

58 000m

58 000m

17 4 74 000m

17 4 75 000m

17 4 76 000m

Datum: NAD27

Copyright (C) 1997, Maptech, Inc.

